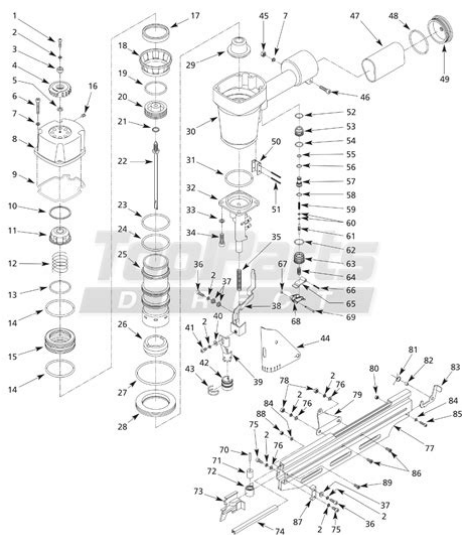


campbell hausfeld iron force nailer manual



File Name: campbell hausfeld iron force nailer manual.pdf

Size: 2202 KB

Type: PDF, ePub, eBook

Category: Book

Uploaded: 29 May 2019, 14:10 PM

Rating: 4.6/5 from 573 votes.

Status: AVAILABLE

Last checked: 18 Minutes ago!

In order to read or download campbell hausfeld iron force nailer manual ebook, you need to create a FREE account.

[Download Now!](#)

eBook includes PDF, ePub and Kindle version

[Register a free 1 month Trial Account.](#)

[Download as many books as you like \(Personal use\)](#)

[Cancel the membership at any time if not satisfied.](#)

[Join Over 80000 Happy Readers](#)

Book Descriptions:

We have made it easy for you to find a PDF Ebooks without any digging. And by having access to our ebooks online or by storing it on your computer, you have convenient answers with campbell hausfeld iron force nailer manual . To get started finding campbell hausfeld iron force nailer manual , you are right to find our website which has a comprehensive collection of manuals listed. Our library is the biggest of these that have literally hundreds of thousands of different products represented.



Book Descriptions:

campbell hausfeld iron force nailer manual

Other features include a nomar tip and a single cycle trigger. This information is provided for safety, and to prevent equipment problems. It is critical to follow all safety guidelines and procedures to ensure the health of the operator. To help recognize this information, observe the following symbols. Follow all instructions. Contact your Campbell Hausfeld representative if you have any questions. c. Only persons well acquainted with these rules of safe operation should be allowed to use the unit. Cluttered benches and dark areas increase the risks of electric shock, fire, and injury to persons. Fig. 3 Do not operate the tool in explosive atmospheres, such as in the presence of flammable liquids, gases, or dust. Watch what you are doing and use common sense when operating the tool. Do not use the tool while tired or under the influence of alcohol or medication. A moment of inattention while operating the tool increases the risk of injury to persons. Dress properly. Prolonged exposure to high intensity noise is able to cause hearing loss. Figure 4 Safety Goggles Do not attach the hose or tool to your body. Attach the hose to the structure to reduce the risk of loss of balance if the hose shifts. Holding the work by hand or against the body is unstable and is able to lead to loss of control. b. A tool is dangerous in the hands of untrained users. f. Maintain the tool with care. Keep a cutting tool sharp and clean. A properly maintained tool, with sharp cutting edges reduces the risk of binding and is easier to control. Never use the tool in the presence of flammable liquids or gases. Vapors could ignite by a spark and cause an explosion which will result in death or serious personal injury. Do not remove, tamper with or otherwise cause the Work Contact Element WCE or trigger to become inoperable. Never carry the tool by the air hose or pull the hose to move the tool or a compressor. Death or serious personal injury could occur. <http://annestorrs.com/userfiles/flaem-nuova-suction-pro-manual.xml>

- **campbell hausfeld iron force nail gun manual, campbell hausfeld iron force framing nailer manual, campbell hausfeld iron force finish nailer manual, campbell hausfeld iron force nailer manual.**

Never place hands or any other body parts in the fastener discharged area of the tool. The tool might eject a fastener and could result in death or serious personal injury. Accidental triggering of the tool could result in death or serious personal injury. Do not make any modifications to the tool without first obtaining written approval from Campbell Hausfeld. A fastener could accidentally be driven if the WCE is not working properly. Personal injury may occur. Do not use the tool if any shields or guards are removed or altered. Do not use the tool as a hammer. The regulated pressure must not exceed 120 psi. Disconnect air supply and release tension from the pusher before attempting to clear jams because fasteners can be ejected from the front of the tool. Always verify prior to using the tool that the air source has been adjusted to the rated air pressure or within the rated airpressure range. Figure 6 Lubrication oil 1. Recommended Hookup The illustration fig. 8 below shows the recommended hookup for the tool. Figure 8 Hookup diagram, showing all parts separately. An inadequate air supply can cause a loss of power and inconsistent driving. 2. An oiler can be used to provide oil circulation through the tool. A pressure regulator is required to control the operating pressure of the tool between 70 and 120 psi. Loading the Nailer 1. Always connect the tool to the air supply before loading fasteners. Make sure that the nails are placed into tool at the proper orientation. fig.11 Figure 11 Loading fasteners 4. Squeeze the pusher and the latch together to unlatch pusher. Make sure the head of the last nail is under the head of the pusher. Adjusting the Nail Penetration Figure 12 Unloading fasteners The IFN21950 is equipped with an adjustable depth of drive feature. Maintenance Instructions Technical Service Please call our Tool Hotline at

18005436400 with any questions regarding the operation or repair of this tool or for additional copies of the manual.<http://dafangtour.com/fckeditor/userimages/canon-smartbase-mp370-service-manual.xml>

Use only genuine Campbell Hausfeld replacement parts. Never substitute parts. Do not use modified parts or parts which will not give equivalent performance to the original equipment. Parker Olube or equivalent must be used on all O rings. Each Oring must be coated with Olube before assembling. A small amount of oil must be used on all moving surfaces and pivots. Modelo IFN03000 Manual Instrucciones Operating Instructions Model IFN03000 Please read and save these instructions. Read carefully before attempting to assemble, install, operate or maintain the product described. Protect yourself and others by observing all safety information. Retain instructions for future reference General Safety Information. WARNING a potentially Replace any hose that is damaged, Cont. Guia de Diagnostico de Averias hazardous situation which, if not avoid weak or worn. Personal injury or tool Deje de usar la clavadora inmediatamente si alguno de los siguientes problemas ocurre.If the damage could occur.No use una valvula de Seguridad Cont. chequeo o ninguna conexion que a menos que se en vez de aire comprimido puede esten clavando permita que el aire perezca en la CAMPBELL CAMPBELL Limited Warranty PROFESSIONAL HAUSFELD PROFESSIONAL HAUSFELD provocar que la herramienta herramienta. Se puede prodVoir la Garantie a la page 13 pour de l'information importante sur l'utilisation commercial de ce produit. Manual de Instrucciones Modelo IFN03000 Instructions D'Utilisation Modele IFN03000 Sirvase leer y guardar estas instrucciones. Lea con cuidado antes de tratar de armar, instalar, manejar o darle servicio al producto descrito en este manual. Protejase Ud. y a los demas observando todas las reglaLe l'attache bloquee. Create one here. What do I get the Shop Calvin Klein Jeans Stretch Ultra Low Flare Ifn21950av. Physician Installation Instructions. Start With Your Model Number. Find Parts Fast. Guaranteed Fit. Repair Videos.

Model Number Locator Need help finding your model Large selection of Campbell Hausfeld products. Search hundreds of shops.Strip Framing Nailer NR90ADS1. Accepts 2 in. up to Cbell hausfeld ironforce ifn2190 instruction manual 29 pages. Need to fix your IFN21950AV Iron Force Framing Nailer.Creators are allowed to post content they produce to the platform, so long as they comply with our policies. United Kingdom. Company number 10637289. It also describes information tools available at eReplacementParts.com. According to our database, the model number you provided is just a portion of a model number with multiple possible variations. To ensure that we recommend parts that will work for your model, please check your information again; you will need to provide us with the full model and serial numbers located on the sticker on the unit itself. Once we have that information, we would be happy to find the part you need. We do carry related parts for units just like yours. For example, part number 796112S Good luck with your repair. They did not replace it. These are brand new tools. Grade A tools have a cosmetic condition of very good to excellent, having no more than light scratches or other minor blemishes. Grade C tools will have pronounced cosmetic imperfections. Shoot straight with this quality nail gun. Adjustable exhaust. No mar tip. Depth adjustment wheel Air inlet.5inch NPT. Nail size range 1inch to 2.5inches. Magazine capacity 100 nails per load, 16gauge. Weight 4 lbs 2 oz. Length 12 inches. Height 11.5 inches. Maximum pressure 110 PSI. Pressure range 70 110 PSI Please Sign in or create an account. Please check your inbox, and if you can't find it, check your spam folder to make sure it didnt end up there. Please also check your spam folder. Si este producto es empleado para uso comercial, industrial o para renta, la garantia sera aplicable por noventa 90 dias a partir de la fecha de compra.

En algunos estados no se permiten limitaciones a la duracion de las garantias implícitas, por lo tanto, en tales casos esta limitacion no es aplicable. Dichos accidentes, abusos por parte del comprador, o falta de operar el producto siguiendo las instrucciones del manual de instrucciones suministrado tambien debe incluir la desconexion o modificacion de los instrumentos de seguridad.

Si dichos instrumentos de seguridad son desconectados, la garantía quedaria cancelada. Estos articulos solo estaran cubiertos bajo esta garantía por noventa 90 dias a partir de la fecha de compra original. Los articulos subrayados solo estan garantizados por defectos de material o fabricacion. Los gastos de flete, de haberlos, deben ser pagados por el comprador. Usted tambien puede tener otros derechos que varian de un Estado a otro. Read carefully before attempting to assemble, install, operate or maintain the product described. Retain instructions for future reference. This dust often contains chemicals known to cause cancer, birth defects, or other reproductive harm. Wear protective gear. Contact your Campbell Hausfeld representative if you have any questions. Serious eye or permanent hearing loss could result. Serious eye or permanent hearing loss could result. Tags and physical segregation are recommended means of control. Failure to follow warnings, dangers, and cautions could result in Use of a reactive gas instead of compressed air may cause the tool to explode which will cause death or serious personal injury. Attach it to this manual or file it for safekeeping. If the regulator fails, the pressure delivered to the tool must not exceed 200 psi. The tool could explode which will cause death or serious personal injury. Death or serious personal injury could result. Never attach air Always reconnect the air line BEFORE loading any fasteners. Do not load the tool with fasteners when either the trigger is depressed or the Work Contact Element WCE is engaged.

The tool could eject a fastener causing death or serious personal injury. Do not use a check valve or any other fitting which allows air to remain in the tool. Death or serious personal injury could occur. The tool might eject a fastener and could result Keep hoses Replace any hose that is damaged, weak or worn. Personal injury or tool damage could occur. Respect the tool as a working implement; no horseplay. Always keep others at a safe distance from the work area in case of accidental discharge of fasteners. Do not point the tool toward yourself or anyone whether it contains fasteners or not. Accidental triggering of the tool could result in death or serious personal injury. The fastener could glance and cause death or a serious puncture wound. If the tool has been dropped or thrown, examine the tool closely for bent, cracked or broken parts and air leaks. STOP and repair before using or serious injury could occur. Podria ocasionarle heridas graves. Cualquier reparacion o reemplazo de piezas los debe hacer Si estos no penetran hasta el nivel deseado, aumente la presion de aire y pruebe una vez mas, conmtinue haciendolo hasta lograr los resultados deseados. La presion de la clavadora no debe exceder 6,9 bar ya que esto reduciria la durabilidad de la clavadora. El desempeno de las herramientas, la seguridad y la duracion pueden disminuir si no se utilizan los sujetadores adecuados. Cuando ordene piezas de repuesto o sujetadores, especifique el numero de la pieza. Le recomendamos que use Parker Olube o un lubricante equivalente en todos los anillos en O. A cada anillo en O se le debe dar un bano de lubricante para anillos antes de instalarlos. Igualmente, debera ponerle un poco de aceite a todas las piezas que se mueven y munones. Finalmente, despues de haberla ensamblado y antes de probar la herramienta debera ponerle unas cuantas gotas de aceite sin detergente 30W u otro aceite similar, en las lineas de aire.

Si necesita ayuda para encontrar un articulo, comuniquese al 18005436400. Los clavos de Campbell Hausfeld cumplen o exceden el estandar ASTM F1667 Do not use the tool if any shields or guards are removed or altered. Do not use the tool as a hammer. Personal injury or tool Stop using the tool if you feel pain in hands or arms. A fastener could Accelerated wear on the tool may occur. Replace any damaged or worn hoses or fittings. Tool performance or durability may be reduced. If an inline oiler is used, manual lubrication through the air inlet is not required on a daily basis. Proper lubrication is the owner's responsibility. Failure to lubricate the tool properly will dramatically shorten the life of the tool and void the warranty. Wipe off any excess oil from the cap exhaust. An inadequate air supply can cause a loss of power and inconsistent driving. A filter can be used to remove liquid and solid impurities which A pressure When the operator depresses the Work Contact Element WCE against the work surface and then pulls the trigger, a fastener will be driven. Dirigenten takkede for valget og konstaterede at generalforsamlingen var lovligt indkaldt.

Beretningen afstedkom en del diskussion om vandforbrug, stophaner og vandmalere. Beretningen blev godkendt. Isr fylder tvister og uenigheder i visse lokalforeninger meget i hovedbestyrelsens arbejde. Det var der og kasseren redegjorde for regnskabet. Økonomien udvikler sig som forventet. Årsrapporten blev godkendt De globale klimaforandringer betyder at verdenshavene over en årrække vil stige og at vi vil opleve flere og kraftigere regnskyl. Vi kan ikke ændre på den lave beliggenhed eller vende udviklingen så vi kan ikke fjerne problemet, men vi kan gøre en indsats for at begrænse konsekvenserne. Bestyrelsen og medlemmer i foreningen har i året løbende diskuteret udfordringerne og udarbejdet et katalog over løsningsmuligheder. Kataloget var udsendt sammen med indbydelsen og kan findes på foreningens hjemmeside.

Kasper Bak og Sara Asmussen gennemgik udfordringerne og redegjorde for de forskellige scenarier og fremlagde de udsendte løsningsmuligheder. Dette medførte en del debat og der blev derefter gennemført en vejledende afstemning hvor medlemmerne kunne tilkendegive deres holdning til de forskellige løsningsmuligheder. Til bestyrelsen blev valgt Formand Erik Tingsoe, Elvervænget 27. Bestyrelsesmedlem Mads Willads Petersen, Elvervænget 2. 2. Suppleant Jytte Borch, Dvrgbakken 36. Deltager Ole Mathiesen, Elvervænget 8. Suppleant Jacob Soborg Andersen, Elvervænget 4. Suppleant Kirsten Fraenkel, Nokkevangen 12. April 2010. Operating Instructions. LongitudAcabado. Cincel. Adhesivo. AdhesivoRead carefully before attempting to assemble, install, operate or maintain the product described. Protect yourself and others by observing all safety information.General Safety.....13. Specifications.....2. Operating The Tool.....35. Troubleshooting.....7. Warranty.....8. Description. This tool is designed for decorativeGeneral Safety. Information. Danger indicatesWILL result in death or serious injury.MAY result in minor or moderateWear protective gear.Contact your Campbell Hausfeld representative if you have any questions.Z87 eye protection equipment, andSerious eye or permanentEnsuring that this manual is available to operators and personnel. Locate model and date code on toolRetain these numbers forThe safe use of the tool. Enforcing that the toolZ87 eye protection equipment, andSerious eye or permanentAssuring that the tool is kept in safeAssuring the proper maintenance ofEnsuring that tools which requireREMINDER Keep your dated proof of purchase for warranty purposes. Attach it to this manual or file it for safekeeping.This tool meets or exceeds Industries' Standards as set forth by the. Operating InstructionsRead and understand tool labels andDEATH or SERIOUS INJURY.

Use only a pressureregulated compressed air source toDo not make any modifications to thePersonal injury or toolDo not operate the tool in explosiveThe tool is able to create sparksKeep bystanders, children, and visitors away while operating the tool. Distractions are able to result in theDo not attach the hose or tool toAlways assume that the tool contains fasteners. Do not point theA moment of inattention whileDress properly. Do not wear looseAvoid unintentional starting. Be sureDo not overreach. Keep proper footing and balance atUse safety equipment. A dust mask,Tool Components And SpecificationsCausa. Remove fingerNever carryNever place hands or any other bodyDo not drop or throw the tool. Dropping or throwing the tool canIf the toolSujetadoresInformation Continued. Clavos. English. Warning. Label. Date code. Latch button. Trigger. Work contact element WCEMagazine. Longitud. Acabado. CabezaGalvanizado. Galvanizado. AdhesivoCajaGeneral Safety. Information Continued. Avoid long extended periods ofStop using theHolding theDo not force the tool. Use the correct tool for the application. The correct tool will do the job better andDo not use the tool if the switchDisconnect theMaintain the tool with care. Keep aA properly maintained tool with sharp cutting edges reduces the risk of binding and is easier to control. Do not remove,Element WCE orUse only those fasteners listed inFasteners not identified for useUse only accessories that are identified by the manufacturer for theDo not use any typeNever use gasolineVapors could ignite by a spark andQuick PlugAlways disconnect the toolAlways reconnect the air line BEFORE loading anyElement WCE is engaged. The nailerAlways fit toolRecommended Hookup. Quick Quick. Plug Coupler. Do not touch theThe tool could eject a fastener whichRegulator. OilerQuick. CouplerAir. Hose. FilterGeneral Safety.

Never carry the Always assume the nailer contains Accidental triggering of the nailer Do not operate Warnings or warning labels are located on the tool magazine and body. Always check Contact. Element WCE Work Contact Element" Section. Disconnect air supply and release Avoid using the tool when the magazine is empty. Accelerated wear on Clean and check all air supply hoses Replace any Tool performance or durability may Air compressors providing air to the National Standards Institute. Standard B19.31991; Safety. Standard for Compressors for. Process Industries. Contact your air Operating The Tool The work surface Failure to lubricate the tool properly will dramatically shorten the life of A filter can be used Place 45 drops of 30. W nondetergent oil Min. Max. An inadequate air supply can cause a loss of The tool can be actuated by depressing The trigger must be released to reset Contact Element WCE trip mechanism The WCE spring Personal injury Operating Instructions. Operating The Tool Contact Element WCE trip mechanism The WCE spring Personal injury may occur. Unloading. Contact Element The tool MUST NOT OPERATE. Do not use the tool if it operates Contact Element Do not use the tool if it operates while lifted from the work surface. Personal injury may result. Work Contact. Element Unloading the Latch. Button Hausfeld nails or Contact Element Magazine rail Contact Element The tool MUST NOT OPERATE. Do not use the tool if it operates Personal injury may result. Work Contact. Element WCE must Work Contact. Element Unloading is the reverse of loading, Operating Instructions Rotate Information. Tool performance, safety Only qualified personnel should repair Campbell Hausfeld replacement parts Contact Element Technical Support Unloading The Please call our Tool Hotline at 18005436400 with any questions regarding Fastener And Replacement. Parts. Use only Hausfeld 18 gauge fasteners or equiv Assembly Procedure For. Seals.

When repairing a tool, the internal Parker Olube or equivalent must be A small amount of oil must be used on Fasteners. Nails. The following Campbell Hausfeld Brad nails are available at local retail stores. For help locating any item, call customer service at 18005436400. Campbell Hausfeld nails meet or exceed ASTM Standard F1667. Length. Shank. Gauge. Finish. Head. Collation. Nails Per. Stick. Box Galvanized. Adhesive Galvanized. Adhesive Nails used in the HDN23200 will also work in Bostitch T311, T2930, BT35, Duofast BB4440, Hitachi NT45A, Paslode 2138F18. Porter Cable BN125, BN200, Sears 18309, and Senco SLP20, LS2, LS5. The following Campbell Hausfeld staples are available at local retail stores. If you need help locating any item, call customer Campbell Hausfeld staples meet or exceed ASTM Standard F1667. Wire. Diameter. Crown. Size. Point Chisel. Chisel. Staples. Per Stick. Per Box. Adhesive. Adhesive Acoplador. Interchange Information PESO 1,19 kg Stop using tool immediately if any of the following problems occur. Serious Any repairs or replacements must be done by a Qualified Service Person or. Authorized Service Center. Cause. Air leaking at trigger valve. ORings in trigger valve housing are Air leaking between hous. Loose screws in housing. Tighten screws Damaged ORings. Replace ORings. Damage to bumper. Replace bumper. Air leaking between hous. Loose screws. Tighten screws Damaged gasket. Replace gasket. Tool skips driving fastener. Worn bumper. Dirt in nose piece. Clean drive channel. Dirt or damage prevent fasteners or. Clean magazine. Damaged pusher spring. Replace spring. Inadequate air flow to tool. Check fitting, hose or compressor. Worn ORing on piston or lack of lubri. Replace and lubricate ORings Damaged ORing on trigger valve. Air leaks. Tighten screws and fittings. Cap gasket leaking. Tool runs slow or has loss. Tool not lubricated sufficiently. Lubricate tool Broken spring in cylinder cap. Exhaust port in cap is blocked. Replace damaged internal parts.

Fasteners are jammed in. Guide on driver is worn Fasteners are not correct size. Use only recommended fasteners. Fasteners are bent. Replace with undamaged fasteners. Magazine or nose screws are loose. Tighten screws. Driver is damaged. Replace driver Replace ORings. Check operation of Work Contact Operating Instructions DURATION From the date of purchase by the original purchaser as follows Campbell Hausfeld Standard Duty and. Harrison, Ohio, 45030, Telephone 800 5436400 Campbell Hausfeld product. Some States C. Any failure that results from an accident, purchaser's abuse, neglect or failure to operate products in accordance Accident,

purchasers abuse, neglect or D. Normal adjustments which are explained in the owner's manuals provided with the product. E. Items or service that are normally required to maintain the product, i.e. orings, springs, bumpers, debris shields, These items will only be covered for ninety 90 days from date of original purchase. Underlined items are warranted for defects in material and workmanship only. F. Cosmetic defects that do not interfere with the product's function. B. Deliver or ship the Campbell Hausfeld product or component to the nearest Campbell Hausfeld Authorized Service Center. Freight costs, if any, must be borne by the purchaser. C. Use reasonable care in the operation and maintenance of the products as described in the owner's manuals. This Limited Warranty applies in the United States, Canada and Mexico only and gives you specific legal rights. You may Cause. Chargeur. Burin. Burin Agrafes. POIDS 1,19 kg. PRESSION MAXIMALE 689,5 kPa. GAMME DE PRESSION 413,7 kPa 689,5 KPa Clous. FB002500 25,4 mm 1 po Collation Rapide. Raccord. Rapide Rapide Air. Filtre Rail du magasin.