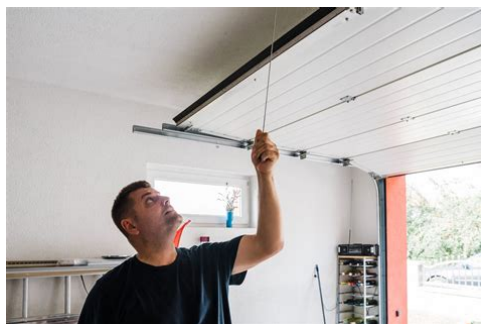


## Can t open garage door manually

---



**File Name:** Can t open garage door manually.pdf

**Size:** 4133 KB

**Type:** PDF, ePub, eBook

**Category:** Book

**Uploaded:** 21 May 2019, 17:29 PM

**Rating:** 4.6/5 from 724 votes.

**Download Now!**

Please check the box below to proceed.



I'm not a robot



reCAPTCHA  
Privacy - Terms

## Book Descriptions:

# Can't open garage door manually



Please upgrade your browser or activate Google Chrome Frame to improve your experience. It's been a long day at work, and all you want to do is make dinner and enjoy a relaxing evening. You reach up and push a button on your garage remote, but nothing happens. Your garage door won't open. Sometimes, however, you click your remote, and the door remains closed. Whether due to external factors like a power outage or internal ones like broken springs, a garage door that stays shut is daunting. How will you access your garage if you can't open the door? We've created this guide to give you practical ways to get in and out of a closed garage — the next time your garage door acts up, you'll know what to do. If your garage connects to your home through an interior door, you're in luck — manually opening a garage door from the inside is easier than opening it from the outside. However, if your garage door is the only way to access your garage, you may need to contact a professional to open your garage door. A garage door repair service will be able to access the emergency latch from the outside of the garage to safely override the electric mechanism. Opening a garage door from the outside can be tricky, so it is best to call a professional to avoid harming yourself or damaging your garage door. Many electronic garage doors come with a bypass switch, allowing you to override the system and manually lift it open when needed. When the cord is pulled, the automated opener carriage that normally opens and closes the door is released from the trolley. This allows the door to slide freely on the trolley without the help of the electric mechanism. If your garage door is stuck partially open and the spring inside the door is broken, the garage door will fall when the cord is released. This could cause damage to the garage door and anything that may be underneath the door when it falls. If your garage door is stuck open, contact a repair service to fix the door safely. <http://www.location-chalet-jura.eu/img/discovery-workshop-manual-free.xml>

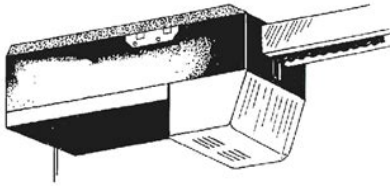
- **how to open garage door manually, how to open garage door manually from outside, how to open garage door manually from inside, hard to open garage door manually, can't open garage door manually, cannot open garage door manually, how to open garage door manually from outside without key, how to open garage door manually with broken spring, unable to open garage door manually, how to open garage door manually from outside with key, 1.0, how to open garage door manually, how to open garage door manually from outside, how to open garage door manually from inside, hard to open garage door manually, can't open garage door manually, cannot open garage door manually, how to open garage door manually from outside without key, how to open garage door manually with broken spring, unable to open garage door manually, how to open garage door manually from outside with key.**

# MODEL 1056



INSTALLATION INSTRUCTIONS  
AND OWNERS MANUAL

READ THESE INSTRUCTIONS CAREFULLY BEFORE  
INSTALLING OR USING THIS OPENER.



**WARNING:**  
DO NOT allow children to play in the area of the door or with radio control transmitters or with padlocks.

**WARNING:**  
Door is under extreme spring tension. Repairs and adjustments, especially to cables and springs, are hazardous and can result in serious personal injury. Repair and adjustments should be performed ONLY by Qualified Service Technicians.

After installation is completed, place instructions in close proximity to garage door.

## INDEX

GENERAL INSTALLATION NOTES	PAGE 1
INSTALLATION INSTRUCTIONS	PAGE 2-8
SENSITIVITY ADJUSTMENT	PAGE 9
OPERATION	PAGE 10
OWNER'S INFORMATION	PAGE 11
TROUBLESHOOTING GUIDE	PAGE 12
WIRING SCHEMATIC	PAGE 13
CARRIAGE/TRACK ASSEMBLY	PAGE 14
PARTS LIST	PAGE 15
POWER UNIT ASSEMBLY	PAGE 16
WARRANTY	BACK PAGE

P/N 106696-0001



11/24/92

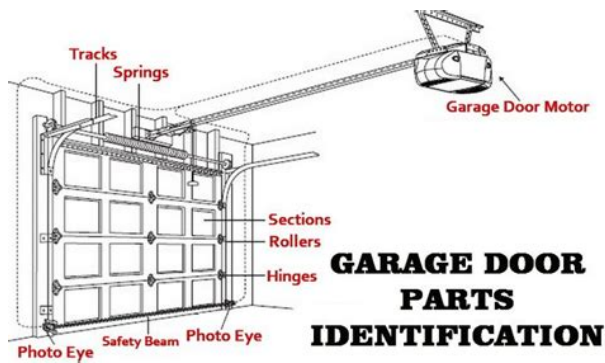
Many garage door release cords come prepared with a handle for easy gripping. Depending on the length of the cord and the height of your garage, you may need a ladder to safely reach the rope. You should then be able to easily lift the garage door. Using both hands, grip and raise the door from the bottom. If your garage door does not open smoothly after pulling the release cord, this could mean the door is off of its track, or the springs are broken. In either case, trying to force the door open will only cause more damage. Without the automated lifting mechanism, the door can slide back down if it is not open entirely. When closing the garage door, lower it slowly and manually lock it by sliding the lock bar. As soon as you can fix the underlying issue or your homes power comes back on, you will have to reset the door back to its automatic mode. One common method has three quick steps — first, while the door is in a manual setting, raise it fully overhead. Next, pull straight down on the red emergency release cord to connect the trolley to the carriage. For some garage doors, you may need to pull the cord down and towards the garage door. When the trolley is successfully reconnected to the opener carriage, you should hear a loud click. Finally, push the control button on either the wall panel or the remote to operate the door. To allow the system to reset, try unplugging your opener. Let the system rest for 30 seconds, then plug the opener back into the socket. If your door still doesnt work, a power surge might have damaged the motor head — contact a garage door repair company for a thorough examination. If you are having difficulty lifting the door, avoid straining your back, knees or shoulders by contacting a garage door repair company to help you open your door. This precaution will prevent injury if the power unexpectedly turns on as youre working. While closed, your garage door experiences the least amount of pressure. <http://www.ibervillecompanies.com/userfiles/discrete-and-combinatorial-mathematics-5e-solution-manual.xml>



Additionally, a closed garage door cannot move, reducing the chance that it will fall and injure anyone or anything underneath. They will be able to make sure it is reset properly to prevent damage and avoid any future problems with your garage door. Below are four situations where you need to know how to open a garage door manually. Power failures lead to a long list of issues, ranging from minor inconveniences to more severe problems. Most likely, your workplace will still expect you to show up on time, and you'll still have errands to run and supplies to purchase. These require a vehicle, which means you have to access your garage. But when the power goes out, the garage door shuts down — if your property experiences an unexpected power outage, you will probably end up with an unresponsive garage door on your hands. Garage doors are heavy. Torsion and extension springs allow the opener to easily lift the door, reducing the amount of stress on the mechanism. Attempt to open your closed garage door — make sure to disconnect the automatic opener, then try to lift the door using the method we discussed earlier. However, if your door is impossible or difficult to lift, or if it slides down once you've lifted it overhead, you are probably dealing with a springs issue. Whether it's our keys, our shoes or our wallets, it's easy to lose track of important items, especially if they're small. Few things are as frustrating as when you're running late to work and can't find your garage remote — you could have sworn it was in your car, where you always keep it. In situations like this, you don't have the time for an extensive search of your car, garage and house, and you can't cross-examine your family about the last time they saw the remote. You're on a tight schedule, and you need to get out of your garage as soon as possible. You can search for your remote or order a new one when you get home, and in the meantime, a little missing box won't disrupt your schedule.

Many natural disasters cause electrical surges and failures, including floods, hurricanes, tornadoes, earthquakes, wildfires and heavy snow and ice storms. In any of these events, an untimely power outage could deactivate your garage door and prevent you from accessing your vehicles. During the firestorms, power grids failed across communities, effectively sealing garage doors shut. Since residents couldn't access their vehicles, the closed garages delayed evacuations. Although many homes weren't on fire, the broader failure of the electrical grid caused every house in the area to experience the same delay. Other doors could be too damaged or too close to the flames. However, if the fire has affected your home's power, your door might not open. In immediate danger situations, knowing how to open and close your garage door manually is vital for you and your home's safety. But operating your door yourself is only a temporary solution — to fix the underlying issue affecting your garage door, you need professional service. Our team of highly qualified professionals is standing by to assist you in any garage door-related repairs you need — we offer 24-hour emergency service, so we're available to help at any hour of the day. Family-owned and operated, Marvin's Garage Doors has been a trusted provider of garage door service in the northwestern North Carolina area since 1970, and we've worked hard to earn a reputation of excellence. Please contact us for more details. Send a Houzz Gift Card. I have been manually open the door for the last week or so without difficulties, but the last two days, I can't open it any more. I made sure that the door is disengaged from the opener's trolley, but when I lift to open it stop after listing only a few inches. I

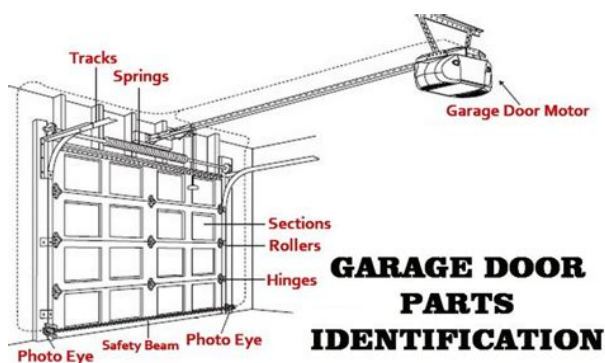
didn't want to force it too hard because I never have to do so before. Am I missing something. What should I look or do now. Thank you in advance.



<http://eco-region31.ru/3mkd75dvm-service-manual>

Either that or one or more of the rollers needs oil. If it is, one of the springs may have less tension than the other one, causing the door to rack and hang up in the track. You might also consider wall storage systems to corral the clutter, and a real and useful work space along the side where the ladders are. We even have automatic openers to go with them. Our handmade creations are made of beautiful woods and have the outswing operation for which we've grown fondly accustomed. It just makes sense to adorn your garage, studio, or barn with a set of carriage doors because they offer a quality of looks and function uncommonly found in our modern era. If you have any questions, please don't hesitate to call us at 18006945977. Click here to view our gallery. Click here to view automatic openers. See More garage door check now breezeway doors.hmm Q Comments 28 So I was peaking at your idea books and came across this older picture of your home. It gives it a different perspective regarding the placement of the front door. I think before anything moves forward, a full plan needs to be thought out as to how to incorporate the current front door if you decide to switch the 2 and even if you don't you should put a plan together which should also address hardscape. At least you have a plan in place even if you do a little at a time and if you make changes along the way, you'll know how it will affect the rest of the plan. They check all of the boxes for the reasons your contractor may not like pocket doors and they come with a 12 year warranty. You aren't limited to any specific door and can even use frameless glass. Check out more on our website! [www.eclisse.us](http://www.eclisse.us) and feel free to reach out to me if you have any questions it.. See More pew1 13 years ago You could also have a broken spring, or the cable has come off the pulley, or the pulley has come off its shaft. If the door takes two people to open, whatever you do, don't leave it open for ANY length of time.

<https://junktiquecollector.com/images/british-dietetic-manual.pdf>



As such, I would expect whatever is suddenly preventing the door from opening, to be quite obvious. The springs associated with overhead doors are under a lot of tension and if not dealt with properly can be quite dangerous. I have two identical doors. When I lift the door, I can see where it stop, but I cant be sure where the actual obstruction or resistance force is. I dont know wether this could be a clue, the porblem started with my Genie Opener, which closed half way. When I pushed remote once, it went back up. But then when I pushed the remote one more time, the opener apparently went the wrong direction and the door went off track and three of the rollers dropped off from one side of the track. Since the opener is still under warrenty, Genie has agreed to send a set of new sensors and a new circuit board, but they insisted that the opener doesnt have the force to push the door off the track. For this I am asking my door installer to return to take a look. I am just wondering whether the two probelms are related the door got pushed off the track, and unable to open the door manually, even though, I was able to open it manually for two weeks after the opener malfunction. Again thank you very much for all of your thoughts. LOL Time to call in the pros. It happened at a friend of mines house the door was stuck and we tried to force it. The whole door had be dissassembled and new rollers and tracks installed somehow one the tracks was damaged. It turns out that the manaul opening problem is related to the openers problem. My door installer came out yesterday, he cant open it either, so he took off the Lshape lever that connect the door to the drive chain from the motor, and the door now open freely. I am waiting for the Genie guy to come to replace the opener together with the drive chain. But I learned a lesson that releasing the drive lever may not mean that you can open it manually and I am glad that I did not force to open the door manually.

<http://halex-group.com/images/british-columbia-strata-property-practice-manual.pdf>



By Mitchell Parker A redwoodclad gem in California's Marin County features a dreamy outdoor oasis with an opendoor policy for the homeowners' friends Full Story 90 HOUSEPLANTS 8 Houseplants You Cant Kill By J. Peterson Garden Design Theyre forgiving and let you forget. Face coverings are required at all locations for walkin customers. We will continue monitoring the situation and take appropriate steps to safeguard our employees. Face coverings are required at all locations for walkin customers. We will continue monitoring the situation and take appropriate steps to safeguard our employees. Distributors of Overhead Door Corp. Distributors of Overhead Door Corp. Perhaps your dealing with a power outage or the garage door motor is not working and you need to get to work. The last thing you want to do is damage your door trying to get your vehicle out. In these situations, it's important to understand how to open a garage door manually. Attempting to disengage the opener while the door is in the open position is extremely dangerous and not advised. If the spring is broken or not properly balanced, releasing the opener could result in the full weight of the garage door slamming to the ground. This could result in extensive damage and bodily harm. When the door is in the closed position, the release cord should be located near the front of the door. The trolley is connected to the door and moves as it opens and closes. Through the attachment point, the trolley is

also connected to the garage door opener carriage. The garage door opener carriage is the mechanism that moves the door along the garage door opener boom automatically. The emergency release cord disconnects the trolley from the carriage so that the door operates manually. If you are unable to lift the door manually due to extreme weight, its possible you have a broken spring. A common misconception is that the garage door openers lift the door when in fact, the springs lift the door.

If you find a broken spring, we highly suggest you contact us immediately for professional repair services. This will compress the spring lever and allow the two mechanisms to reconnect. That is, all of the way up and all of the way down. When the trolley and carriage pass one another, you should hear a loud click. They are now connected and you can open and close your garage door electrically again. Justin was born into the door industry, ultimately following in his fathers footsteps and joining the family owned business in 2011. After spending time in the field with fellow mechanics, Justin found his niche in marketing, along with a specialty in residential garage door sales, installation, and service. These services include new garage door sales, professional installations, and 24hours a day, 7days a week garage door repair services on all makes and models. Explore the interactive map below to see the areas and locations that we proudly serve. Please visit [Garage Door Repair.com](http://GarageDoorRepair.com) to find your local experts! Offering the best in residential and commercial garage door sales, installation, and 24hour garage door repair services. Proudly serving Harrisburg PA, HanoverYork PA, Frederick MD, Suburban and Southern MD, Washington DC, Northern VA, Fredericksburg VA, Richmond VA and the surrounding areas. The Overhead Door logo is a registered trademark of Overhead Door Corp. All rights reserved. Contact Author Youll also find tips for opening the door manually while youre trying to figure out how to fix the problem! Make sure that your garage door opener is plugged into a working outlet. Outlets sometimes go out without warning so you can check to see if the outlet is working by plugging another working electronic device into it. Also, check your circuit breaker, fuse, or GFCI. Springs are rated for a certain number of cycles and are the first thing that will break in your garage door assembly.

<http://www.acefence.com/wp-content/plugins/formcraft/file-upload/server/content/files/1626fe04c9985f--bose-stereo-system-manual.pdf>

If you have a broken spring, you should NEVER try to open the door, as it can be very dangerous. This repair should be left to a professional or someone with the right tools and skills. Sometimes, the cable will cause damage to a vehicle or wall, and if a person happens to be in the way of the cable, it can cause serious harm. If your cables have snapped, you should call a professional to help you. See the video above. You can adjust the close force and limit switch to the correct levels, and you should be good to go! It will assume that it has hit an obstacle and will automatically backtrack to avoid damage. Check the owners manual or the buttons on the motor to adjust the limit settings. It may take some trial and error to get the setting just right. Some models are labeled "up" and "down." Consult your owners manual for help. If it wont go up, adjust it up. A full turn of the screw equals about two inches of door movement on most models. Keep testing it to see if it works. Does the door seem to slow down or get stuck along the way. If so, youll know that section of track is misaligned. A level and a rubber mallet might help. Check the tracks for stuff like dirt, rocks, bits of trash, or other debris. Give the tracks a wipedown to dislodge anything that might be getting in the way. Check to see if there are any metal parts that have slid down to bar access. If there are, locate the locking knob or handle and use it to disengage the lock. If all else fails, you might try spraying the track with lubricant. Whats wrong It could be a problem with wiring or with the logic board. See the video below for more information. If the garage door is the only way in or out, or if you cant find the key to the door, youll have to either find a way to break in or call a locksmith. As a preventative measure, its smart to keep a spare key or install an emergency key release that would allow you to release the emergency disconnect to the operator so you can manually raise the door.

This is the emergency disconnect, and it should release the door and enable you to move it. If it won't move, go back up to pull the red cord again. You may have to call a locksmith or find a way to break in. As a preventative measure, it's smart to install an emergency key release that allows you to release the emergency disconnect remotely so you can manually raise the door. Content is for informational or entertainment purposes only and does not substitute for personal counsel or professional advice in business, financial, legal, or technical matters. Comments are not for promoting your articles or other sites. Stop working. LD lite is not on. I disconnected power and reconnected again. It opens and closes manually. Where is the problem I have to hold the wall opener to open all the way. Thought it needed a new battery. Had one fitted. Now the remote only works sometimes if held very near to the control box and not at all from outside. The second remote is fine. Any thoughts anyone. I don't have any problem for closing the door from inside using key pad or remote from outside. When I use the remote from outside, the door goes up only a few inches and stops, it does not go up even if I continue pushing remote button. By the way this problem started after a week of cold weather and rain. And I found out that the lights of the two sensors shut off, but there is power in the system. What's wrong with that Thanks. The motor light does not flicker as if something is blocking it, everything appears normal. Light turns on at box as if its opening. Help! The motor will not turn on. It'll just go up 10 inches or so and then stop. I even tried to reset everything. 7 what is the problem. Can you help The sensor lights are clear. I disconnected the door from the traveler and still only moves a few inches. There is not a sensor alignment problem. My remote works from house, works from mailbox yes mailbox but only sometimes works from 2 cars.

We have replaced both car remotes with new batteries. Once last week I was sitting in my living room and it opened and closed by itself a few times. Please help and thank you How can I fix it Tried to reset remotes and get nothing. It will open from the wired button but no remotes. Are they temperature sensitive. I do not hear the motor running but the light does turn on. Help!!! So I got up in the box and reprogrammed the remotes. That fixed it At first one remote worked after hitting it several times right in front of the door. Changed batteries but neither work now. Thanks Could not open from outside. Went into house and, from inside garage, tried automatic opener but this did not work. So in trying to open the door manually, I reached up and pulled on the red cord attached to a lever. What I could not see, and was not expecting, is that the rope was frayed through almost completely. The rope broke when I applied some weight to it, sending me backwards onto the floor of the garage. My question is, was there another way I could have opened the garage door manually, thereby avoiding what happened And when I want close it with the bottom, I have to continue pushing the bottom until door to be completely close. Does anybody have any suggestions I have changed the battery but still no luck. Does anybody have any suggestions It will work close but not from outside Guess I have to cut a hole in my door to pull the disconnect cord, then I can open it Not wanting to work sometimes. I noticed the blue light flashing on the opener when I push the remote button. Today it will not open. That is the only way in, so I can't go in the garage from inside the house. I can't pull the cord to release the belt drive. How do I open it now. I never did run wires to the manual button into the house. I have to use the opener. Only have one I can find now. It is not working. I need in there now. I went inside and tried to pull rope from rail, it all stop with loud sound.

What is wrong But works fine in morning What could be the problem If I keep the remote in a cup holder and press it, the door opens. The opener just quits. Neither the remote nor the wall switch will work. The only way to unfreeze it is to disconnect, then reconnect the power. But it happens again, and again. Is there a circuit board or part that is homeowner friendly to replace It has power but nothing happens when I try and open. No motor sound or anything. Please help!!! The wall button is working though and I changed the battery in the clicker.any ideas If you press the button



to close it from that half, it goes down and when it touches the floor it goes back to half on it Owen. Any idea what i can do to fix this I have changed the batteries and reset the codes. The garage door opener was put in in 1998. Need a little help any suggestions I tried to work it it manually and it wont budge Door wont open by using the remote and I have no other way to get inside It will only open a few inches from the car. It will open completely as long as Im holding the button down the whole time. What could be wrong Any idea what could be wrong There is a cord that you pull that disengages the door from the opener. When it is pulled the trolley that rides along the bar will move back and forth but the door doesnt move. All you need to do is push the release lever back up. Only difference is that my opener is screw driven and not chain. I would love a response to this problem. Thank you. The motor runs and the shaft turns, but seems it is not engaging the chain. It does close when opened manually. Please advise on what the problem may be. Thank you. Other product and company names shown may be trademarks of their respective owners. HubPages and Hubbers authors may earn revenue on this page based on affiliate relationships and advertisements with partners including Amazon, Google, and others. HubPages Inc, a part of Maven Inc. HubPages Inc, a part of Maven Inc.

To provide a better website experience, dengarden.com uses cookies and other similar technologies and may collect, process, and share personal data. Please choose which areas of our service you consent to our doing so. Login This is necessary to sign in to the HubPages Service. Google Recaptcha This is used to prevent bots and spam. Privacy Policy Akismet This is used to detect comment spam. Privacy Policy HubPages Google Analytics This is used to provide data on traffic to our website, all personally identifiable data is anonymized. Privacy Policy HubPages Traffic Pixel This is used to collect data on traffic to articles and other pages on our site. Unless you are signed in to a HubPages account, all personally identifiable information is anonymized. Amazon Web Services This is a cloud services platform that we used to host our service. Privacy Policy Cloudflare This is a cloud CDN service that we use to efficiently deliver files required for our service to operate such as javascript, cascading style sheets, images, and videos. Privacy Policy Google Hosted Libraries Javascript software libraries such as jQuery are loaded at endpoints on the googleapis.com or gstatic.com domains, for performance and efficiency reasons. Privacy Policy Features Google Custom Search This is feature allows you to search the site. Privacy Policy Google Maps Some articles have Google Maps embedded in them. Privacy Policy Google Charts This is used to display charts and graphs on articles and the author center. Privacy Policy Google AdSense Host API This service allows you to sign up for or associate a Google AdSense account with HubPages, so that you can earn money from ads on your articles. No data is shared unless you engage with this feature. Privacy Policy Google YouTube Some articles have YouTube videos embedded in them. Privacy Policy Vimeo Some articles have Vimeo videos embedded in them.

Privacy Policy Paypal This is used for a registered author who enrolls in the HubPages Earnings program and requests to be paid via PayPal. No data is shared with Paypal unless you engage with this feature. Privacy Policy Facebook Login You can use this to streamline signing up for, or signing in to your Hubpages account. Conversion Tracking Pixels We may use conversion tracking pixels from advertising networks such as Google AdWords, Bing Ads, and Facebook in order to identify when an advertisement has successfully resulted in the desired action, such as signing up for the HubPages Service or publishing an article on the HubPages Service. Statistics Author Google Analytics This is used to provide traffic data and reports to the authors of articles on the HubPages Service. Privacy Policy Comscore ComScore is a media measurement and analytics company providing marketing data and analytics to enterprises, media and advertising agencies, and publishers. Nonconsent will result in ComScore only processing obfuscated personal data. Privacy Policy Amazon Tracking Pixel Some articles display amazon products as part of the Amazon Affiliate program, this pixel provides traffic statistics for those products Privacy Policy Clicksco This is a data management platform studying reader behavior Privacy Policy . Please upgrade your browser or

activate Google Chrome Frame to improve your experience. Whether you're in your car heading home through the pouring rain or waiting out the storm from the comfort of your living room, violent wind and weather can be unnerving — especially when the power goes out. In addition to the inconvenience of having no light or cable, you face other problems when the electricity is out — like the inability to open your garage doors. Whether you've pulled into your driveway and realize you can't get into the house or you're trapped inside with no way to get your car from the garage, a door with no power is a problem.

With the wind howling and lightning flashing, you can't help but wonder — can you manually open a garage door. No matter the weather, we're here to help you get that door to budge. Every modern garage should come with an emergency release kit, a system installed into your garage that allows you to manually open the door from the inside or outside. Next time you find yourself without power, and you need to get out to drive to work or get in during a pounding rainstorm, you can use a few simple steps to pull that garage door open successfully. This red cord attaches to the trolley, which connects the arm of your garage door to this center track. Only use the emergency release handle when the garage door is closed. This cord should disconnect the garage door from the trolley and allow you to move the garage door manually. If your door has a lock bar, manually slide it to lock. This lock stores an emergency release cable. You'll also need to have the corresponding key. This cord will trigger the release mechanism, which puts your door into manual mode. With your key, unlock the door and turn the handle so that it is vertical. If the power comes back on, the opener might attempt to open the door while it is disengaged, which can make it harder to reconnect. Your garage door springs are dangerous to work with, so you will need the help of a professional. Never use the emergency release when the door is open, or the weight of the door could come crashing down. It's best to wait until your power comes back on before trying to close the door or call a garage door technician to help. Even a forceful wind could cause the door to close. Keep the doorway clear and children a safe distance away. Make sure to close the garage door as soon as you can. When the power is out, the automatic lock on your garage door is inactive. Slide the manual lock into place to keep your home protected during an outage. In that case, it's best to contact a professional.

<http://www.bosport.be/newsletter/3mkd75dvm-service-manual>